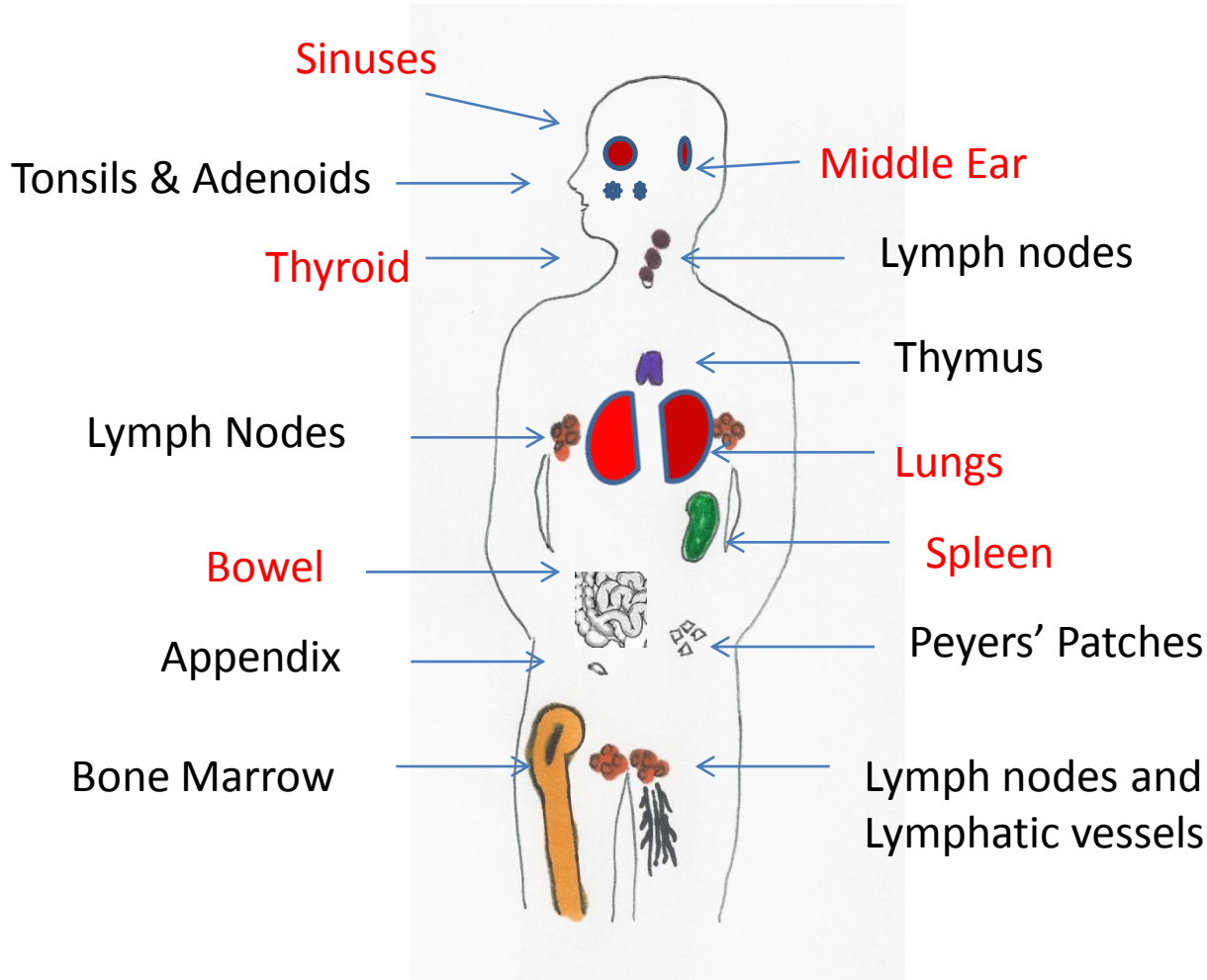


# The Immune System and Organs affected by PID



The immune system is made up of a network of cells, tissues, and organs that work together to protect the body. In PID, the organs that are mainly affected are: Sinuses, Middle Ear, Thyroid, Lung, Spleen, Bowel and Blood. If not diagnosed early, the organs become permanently damaged. Even with treatment, the damage cannot be reversed.

*Many GPs are not aware of PID and part of our campaign targets more awareness in the medical community.*